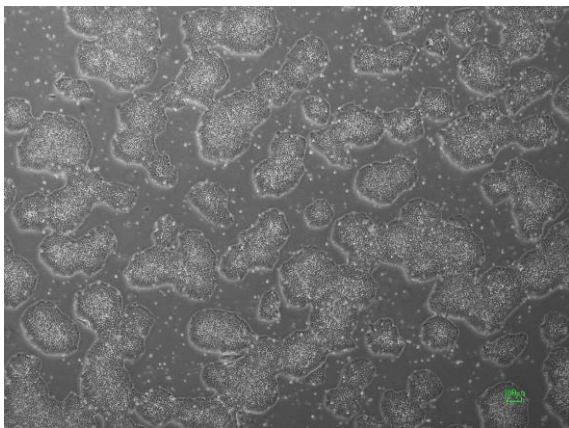
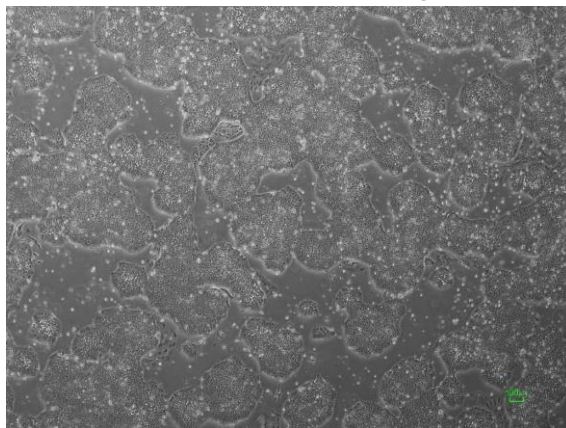


## 【 CiRA-jk-0051 】 Morphology of iPSC colonies

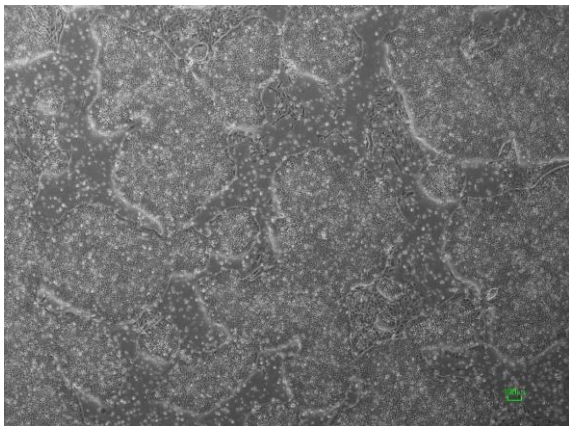
CiRA -jk-0051-A: passage-2



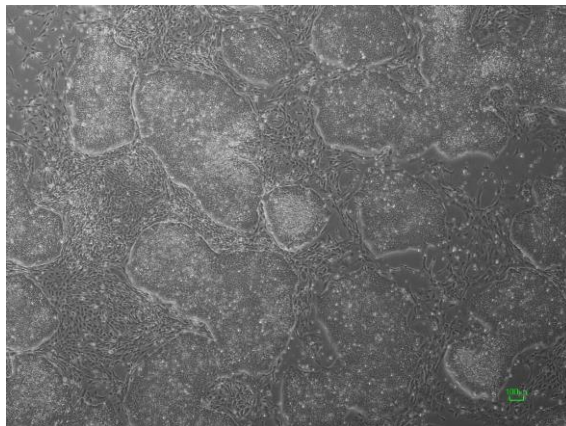
CiRA -jk-0051-B: passage-2



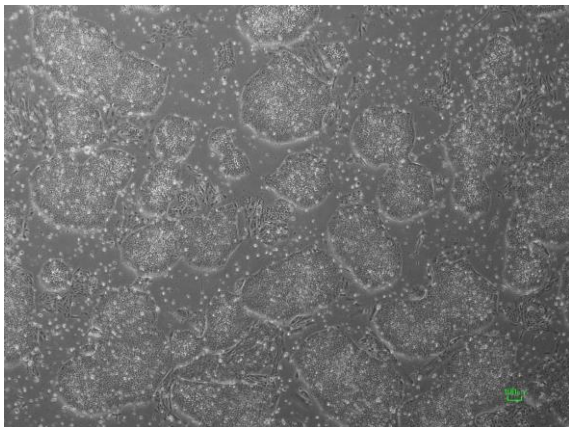
CiRA -jk-0051-C: passage-2



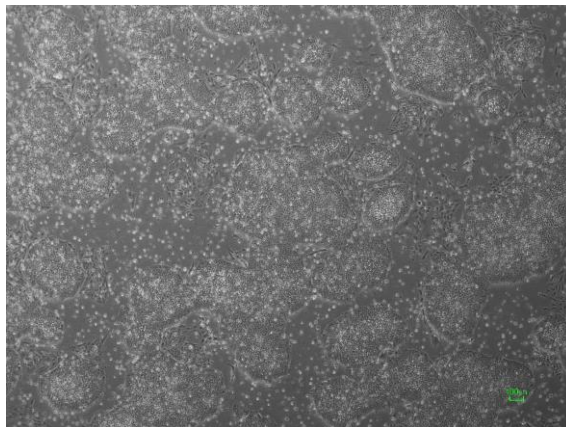
CiRA -jk-0051-D: passage-2



CiRA -jk-0051-E: passage-2



CiRA -jk-0051-F: passage-2



( All images were captured at 4x magnification )